

Dates for your Diary

Mon. 02 Dec. – Craft & Friendship group – 10.30am
Wed. 04 Dec. - 2nd Advent Study 2pm
Mon. 09 Dec. – Craft & Friendship group – 10.30am
Mon. 09 Dec. - Women's Circle Christmas Evening 6pm
Wed. 11 Dec. - 3rd Advent Study 2pm
Mon. 16 Dec. - Craft & Friendship group followed by lunch
Wed. 18 Dec. - 4th Advent Study 2pm
Mon. 13 Jan. - Craft & Friendship group – 10.30am
Mon. 20 Jan. - Craft & Friendship group – 10.30am
Mon. 27 Jan - Craft & Friendship group – 10.30am
Thurs 30 Jan. - Men's Meeting – 7.15pm

~~~~~  
**Family News** – To our friends unable to worship with us we send our love and prayers for a blessed Christmas. Please pray for God's work here, that the church will be a beacon of God's love in our community.

~~~~~  
Worship at 10.30am for December - 01 - Revd Nowell, HC; 8 – Revd Nowell – Gift Service; 15 – Revd Nowell, Cafe 10.30am and Carols at 6pm; 22 – Folk Carols at 3pm; 29 – Revd Nowell, Cafe

Worship at 10.30am for January – 05 – Revd Nowell, Covenant HC; 12 – Revd A Burrows; 19 – Revd Nowell; 26 – Revd Nowell, Cafe

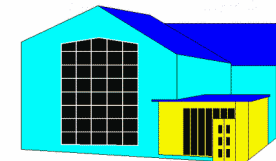
Collections for November - 3rd - £180.23; 10^h - £190.48; 17th - £154.50
24th - £148.00. Total so far this month £673.21.

We need £880 each month to cover our expenses.

If you want to protect the environment you can sign our **Church Christmas Card** and read it to see who has sent you good wishes. The postbox will also be out on 1st, 8th and 15th December.

Christmas Fair – What a wonderful morning we had. A huge thank you to everyone who helped and supported this annual event – we raised £673 on the day and since we have added to it so now have raised £711.21 to help our work here.

Deadline for February Newsletter – 25 January



December/January 2020

MONKS ROAD METHODIST CHURCH

Welcome to our church. If you are a visitor you are most welcome. We pray that everyone worshipping with us will receive encouragement and feel uplifted. We are surrounded by others who want to reflect the glory of God; we are being built up to give our lives in service and are trying to develop the fruits of the Spirit to benefit each other and those around us.

~~~~~  
**Advent** – a time of anticipation, of waiting, a time when Christians look forward to the coming of Jesus and all that means for our lives both here and in eternity. This year advent begins on 29 November, and our Advent Bible study begins on Wednesday 27 November at 2pm in the lounge to which everyone is invited. We shall be studying the paintings of He Qi as we consider and ponder what the coming of Jesus has to say to us in today's world. Enjoy all the aspects of Christmas, the colours, the lights, the food, the friends and family get-togethers. It is an important time when we make efforts to meet or contact those we haven't been in touch with for a while and keep friendship and loving alive. Importantly for Christians it is a time when we can try to realise again how much God loves us and how he shows us this by sending Jesus to us. Through this season we use our Advent wreath at church. This gives us a shorthand way of thinking about the history of our church and the different aspects – God's people, the prophets, John the Baptist and Mary who responded to God's call – all of which can ground us in our faith and urge us on to live our lives within the indescribable love of God and for his people. A happy and blessed Christmas to you all and a new year filled with purpose for God's kingdom.

**Environmental Concerns** Have you ever wondered what is in your chocolate or spread? There is one item that you should check for – PALM OIL. November 10<sup>th</sup>- 16<sup>th</sup> was a week you have probably not heard of but it was **Orangutan Caring Week**, an annual event aimed at drawing attention to the plight of the critically endangered orangutan and its rainforest home. The Borneo rainforest is vital for the earth, animals, insects, & humans who live there and rely on it for sustenance. Between 1985 & 2001 more than half was deforested for hardwood, that's about the size of Belgium. Since then deforestation has risen horrendously from 600,000 hectares in 1985 to over 6 million hectares by 2007 for the production of palm oil, a lot of it produced illegally. Palm oil is in many of our foods and some of the biggest companies use it in our chocolates, spreads, confectionery, cakes & sweets and lots of the biggest banks support this. Because of Palm Oil production the habitat of the orangutan and other forest-dwelling creatures is desperately shrunken. The latest count of our critically endangered orangutans is just over 13,000 and their habitat is shrinking so fast that even if this number survives the size of their surviving habitat will not be enough to sustain them. It is vital that we check that what we buy does not contribute to this decline. Check the packaging to ensure you are not buying anything that contains PALM OIL



**Gift Service – Sunday 8<sup>th</sup> December, 10.30am**

If you would like to help the young people who are leaving care this Christmas we shall be collecting presents to help them on their way. Lorraine has been in touch with Lincolnshire Leaving Care Service and they would like personal things like gloves, hats, scarves, socks and underwear; also

tinned food that has a long shelf life would be acceptable. This year they do not need toiletries as they have been given some by a company.

**Leaving Care** supports young people who are making the transition from Care to independent living, with follow-on services providing skills, knowledge and access to 1:1 advice; including access to supported lodgings, help getting a job and on the Job Training scheme.

**Women's Circle – Monday, 9th December – 6pm** Thanks to Lynne & Mick Breward who will be hosting our Christmas evening again. If you are coming you are invited to bring a secret Santa that costs £1 or only a very little more. Everyone is invited also to bring a small plate of nibbles. As agreed at our AGM we shall not meet again until 7<sup>th</sup> April when we have decided to meet on Tuesday afternoons.

**Carols with the Beevor Band – Sunday 15<sup>th</sup> December at 6pm**

Please join us as we sing and celebrate Christmas with our friends from the Beevor Band. The band has kindly offered us this evening so please invite your families and friends to this traditional Christmas event.

*You are warmly invited to our*

***Folk Carol Service***

***On Sunday 22nd December at 3pm***

*Come and share Christmas with us in an informal and lively celebration of old yuletide carols and songs*

***Music led by Jonathan Nowell and friends***

**Christmas Day Service at 10.30am.** Join us to celebrate the birth of our Lord, Jesus Christ. Please bring a present to open if you would like.

**Homeless Sunday - 26<sup>th</sup> January** We shall be sharing a soup lunch after the morning service to support Nomad, our Lincolnshire Homeless Charity

**Men's Group** will meet at 7.15pm 30<sup>th</sup> January when the speaker will be Revd Terry Nowell. A variety of interesting speakers are invited through the year and all men are invited.

**Modern-day Slavery.** We are all cheering on Sam Morton who begins his 300km, five day run on 25 November to help fight modern-day slavery.